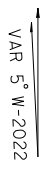
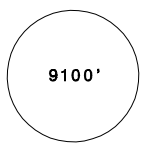
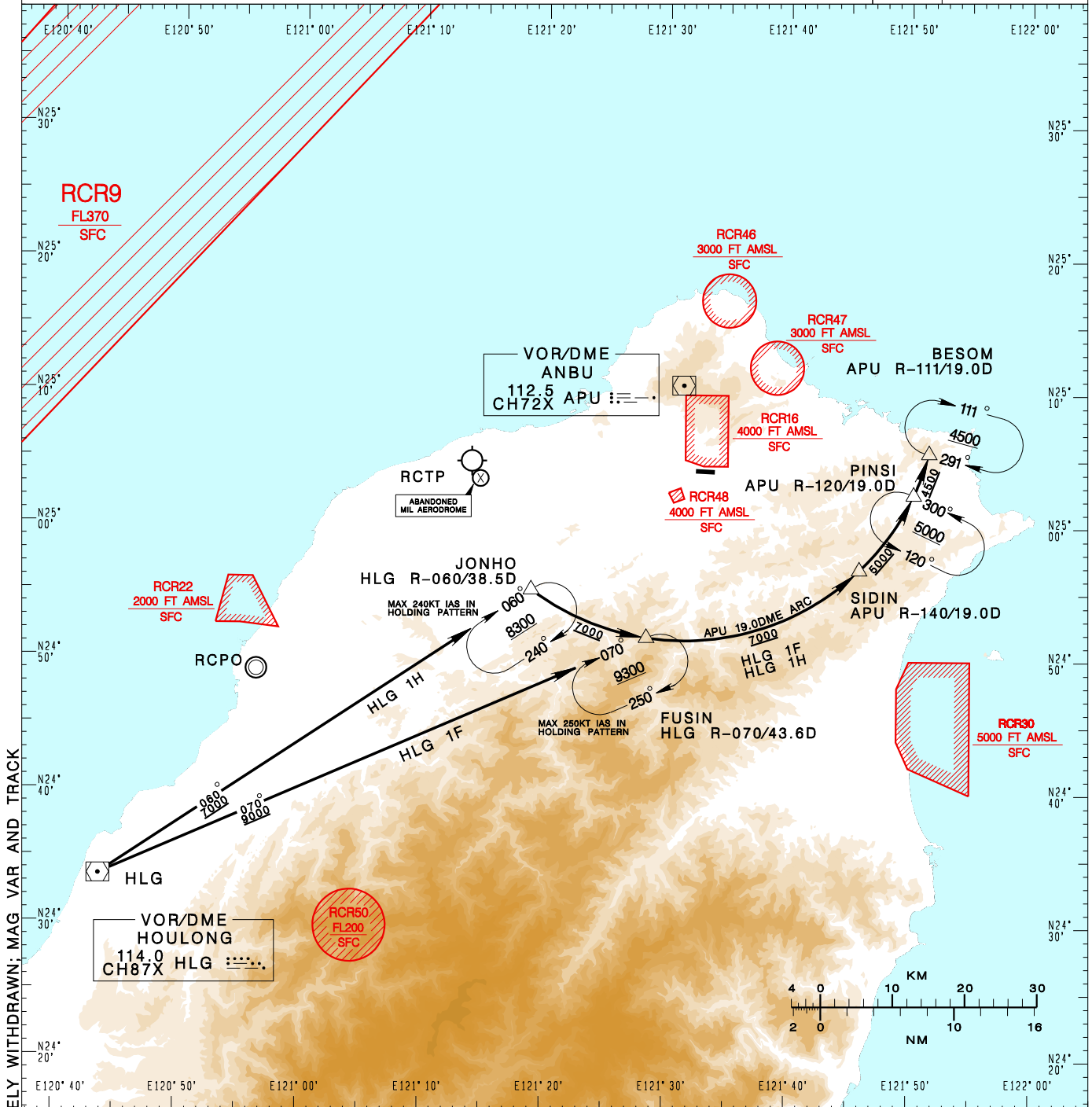


臺北/松山機場
TAIPEI/SONGSHAN AD

RCSS STAR
HLG 1F(RWY28)
HLG 1H(RWY28)

| | | | | |
|--|---------------------------------|--------------------|--|--------------------|
| TAIPEI ACC 126.7 129.1 127.9 | TAIPEI APP 119.7 119.6 125.1 | ATIS 127.4 341 |   MSA APP 25NM | |
| Apt Elev: 18' | | Trans Level: FL130 | | Trans Alt: 11,000' |
| BEARINGS ARE MAGNETIC; DISTANCES ARE NAUTICAL MILES; ELEVATIONS, HEIGHTS IN FEET | | | | |



CHANGES: RCR49 COMPLETELY WITHDRAWN; MAG VAR AND TRACK

HOULONG ONE FOXTRAT ARRIVAL
Depart HLG, track HLG R-070 to FUSIN, then join APU 19.0 DME ARC to SIDIN, PINSI, then BESOM.

HOULONG ONE HOTEL ARRIVAL
Depart HLG, track HLG R-060 to JONHO, then join APU 19.0 DME ARC to FUSIN, SIDIN, PINSI, then BESOM.